

# St Clare Garden

## A GENEROUS DONATION TO TAU CENTER

by the estate of *Meg Summersgill*, sister of *Sr Pat Irr, OSF*, provided the opportunity for *Sharon Devo, Director* to propose the creation of a contemplative garden to provide space for Tau Center program offerings, in alignment with Meg's bequest, that could also be **designed for use by the Wheaton Franciscan Community**. With the enthusiastic support of the Regional Leadership Team, planning began in January 2021. As Project Manager, Sharon convened three collaborative teams; Project Team, Vision Circle and Event Planning Team.

**Adjacent to Our Lady of Angels Motherhouse, the St Clare Garden will be a place of gathering and contemplation.**

## PROJECT TEAM

*Jack DeRose, Ray Ward, S Glenna Czachor, OSF* and *Sharon Devo* worked with *Hitchcock Landscape Architects* over eight months to determine the optimum site and create a design concept based on our needs. The Regional Leadership Team approved that concept in November, providing matching funds and budget parameters in December. Our team continues working together as **we move into the construction phase this Spring**.

## VISION CIRCLE

*S Pat Irr, S Glenna Czachor, S Gabriel Uhlein, OSF, S Arlene Arshack, IBVM, CC Shirley Justin-Wolff* and *Sharon Devo* had their initial conversations in April 2021 and reconvened in February, 2022 to begin work together to design the artwork and overall ambiance. This phase of the project is just beginning and will first focus on **commissioning a piece that honors St Clare of Assisi**.

## DEDICATION AND EVENT PLANNING TEAM

*CC Jeanne Connolly, Melanie Teska* and *Sharon Devo* began work together in February to begin initial planning for the **Garden Dedication**.

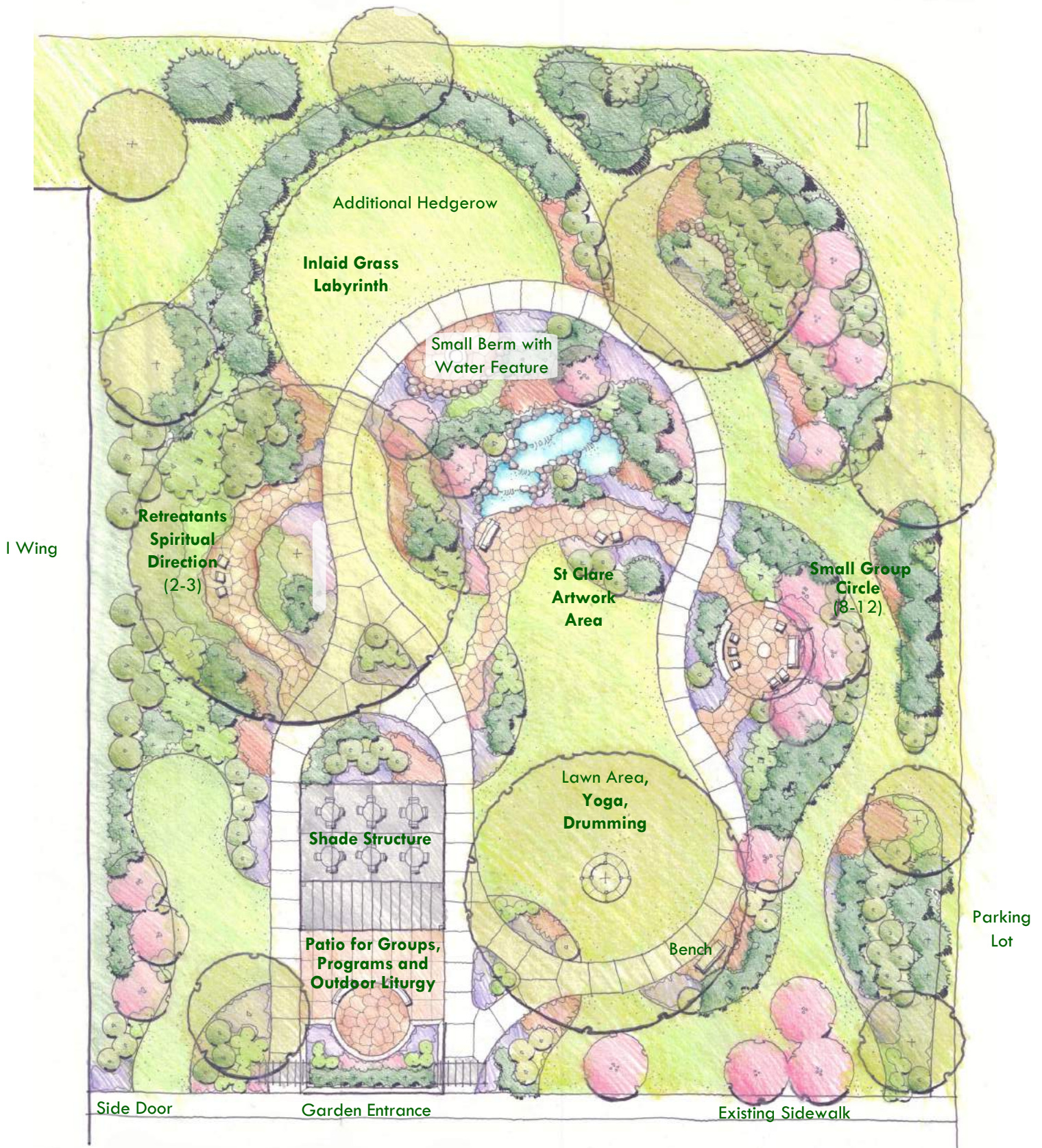


A spirituality ministry of the  
Wheaton Franciscans

**“EVERYTHING IS CONNECTED.**

Concern for the environment thus needs to be joined to a sincere love for our fellow human beings and an unwavering commitment to resolving the problems of society.”

*(Laudato Si' no. 91)*



Patio and Path Layout to Scale  
Planting Beds to be Refined