

# St Clare Garden

The **St Clare Garden** provides a place of stillness and serenity that compliments the Peace Path walking trail and the Cosmic Walk currently located on the grounds of the Wheaton Franciscans. Amenities include a large, shaded patio area for outdoor gatherings with an adjacent lawn area for yoga and drumming. Secluded seating areas provide a space for journaling and quiet conversation in a tranquil nature setting that includes a water feature and artwork in honor of St Clare.

Planning and design started in January 2021, with construction continuing in 2022 followed by landscaping in 2023. A range of eco-spirituality, creative offerings, and retreats are available for individuals and groups in this new space that aligns with the mission of Tau Center.

*Adjacent to Our Lady of Angels Motherhouse, the St Clare Garden is a place of gathering and contemplation.*

## A PRAYER TO ST CLARE

*by Sr Pat Irr, OSF*

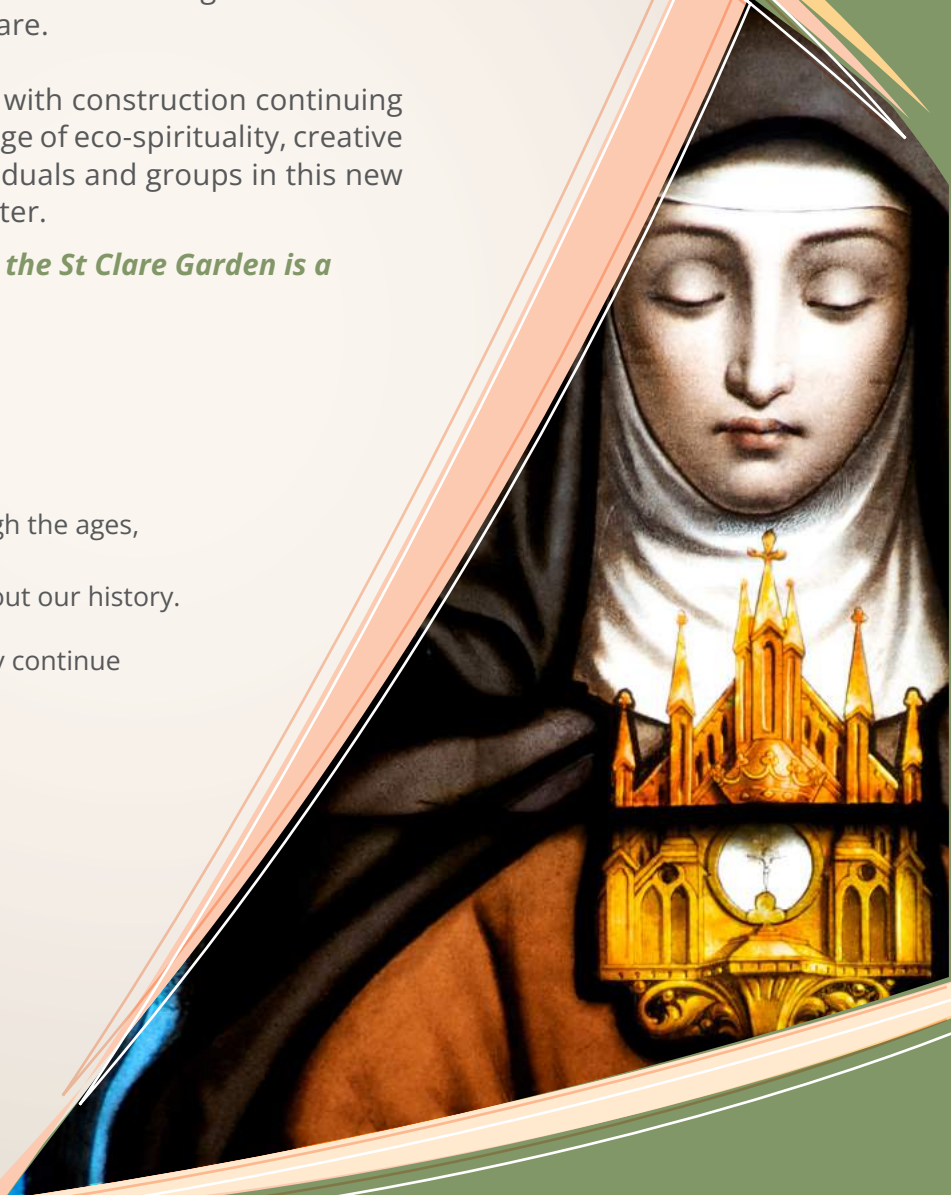
Oh glorious St Clare, your light shines down through the ages,  
reminding us that  
you are a beacon of God's love and grace throughout our history.

St Clare, guide us in this project that your light may continue  
to blaze forth for the  
people of this generation.

May the clarity of your love touch all of those who  
walk these paths.

And may the beauty of this garden, speak to us of  
God's love and care for them in our day.

Oh St Clare, deepen the trust of all hearts that all  
people may experience the love  
that has created this sacred space. Guide us  
through your wisdom into the Spirit of  
Christ, our Risen Lord. Amen

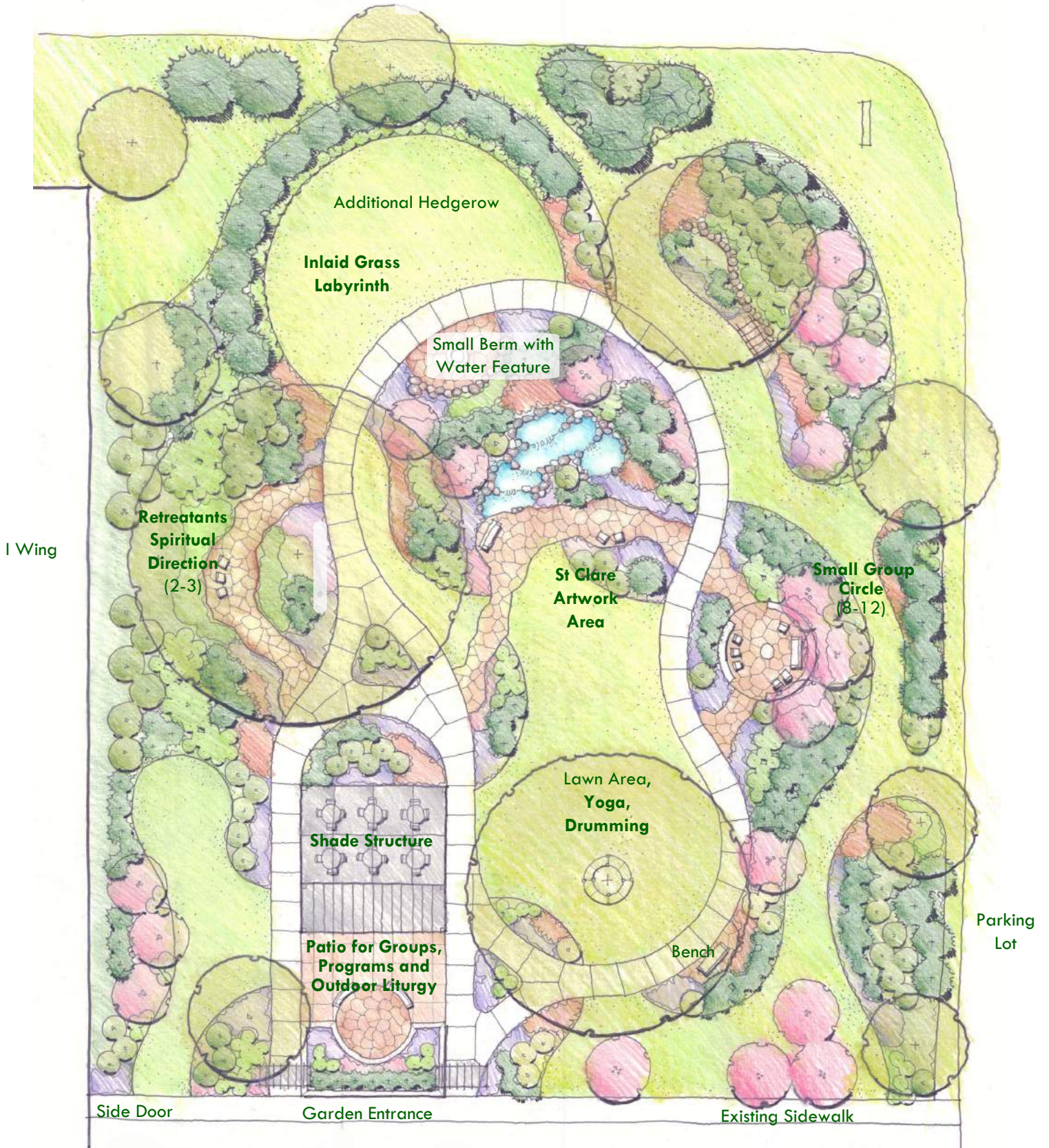


*A spirituality ministry of the  
Wheaton Franciscans*

## “EVERYTHING IS CONNECTED.

Concern for the environment thus needs to be joined to a sincere love for our fellow human beings and an unwavering commitment to resolving the problems of society.”

*(Laudato Si' no. 91)*



Patio and Path Layout to Scale  
Planting Beds to be Refined